

SPEED-MASTER EP-22/GA

- designed from windsurfer for windsurfer -

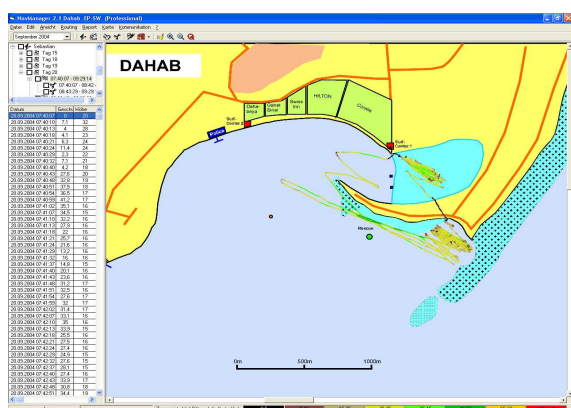
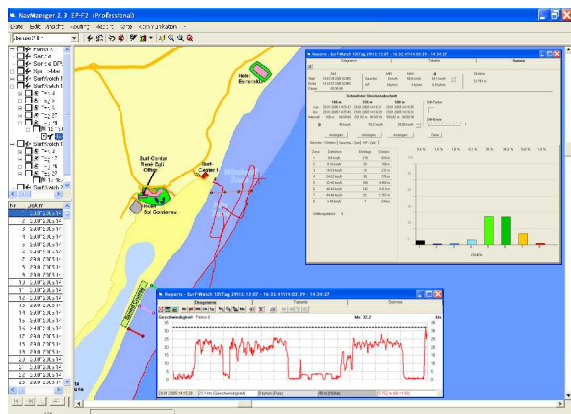
The **SpeedMaster** work similar to a speedometer at the bike, but he still offers much more functions. During the ride, the current speed, the put back stretch of way, the time and a few more values are displayed. The system has also a measuring system which can be started manually or automatically for the definition of the average speed for the sampling lengths of 100m, 250m and 500m in accordance with the determination of the ISA (International Speed Association).

All the data are recorded automatically and can be valued and matched with the Personal Computer software "**NavManager 2.3**". The Software allows an automatic timekeeping with ranking between a starting and finish line on the map, these lines can entered into the map by the user with a mouse click. The software offer further extensive report possibilities specially for windsurfing as number of the jibes, jibe speed, jumps, The put back ways are announced on the digital map together with the relation to speed. The system is also interesting for canoe sportsman, jet ski driver and sailors.

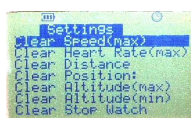


Björn Dunkerbeck during the Speed Challenge 2004 in Fuerteventura

The software "NavManager 2.3"



Display



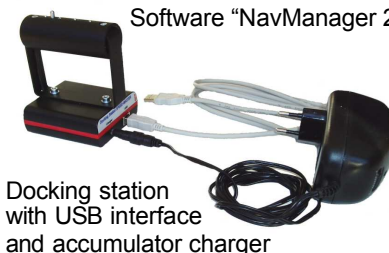
The accessories



EP-22/GA



Software "NavManager 2.3"



Docking station with USB interface and accumulator charger